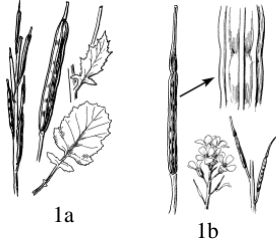


Phylogenetic studies indicate *Sinapis* and *Brassica* are polyphyletic as previously circumscribed. *Rhamphospermum* is resurrected to create monophyletic genera, with *Brassica nigra* and *Sinapis arvensis* included in *Rhamphospermum*. (Al-Shehbaz, I. 2021. Nomenclatural adjustments in *Eutrema*, *Ceratocnemum*, *Rhamphospermum*, and *Sinapis* (Brassicaceae, Cruciferae) Harvard Papers in Botany, Vol. 26, No. 1, 2021, pp. 1–4). A new genus treatment and key are created here to accommodate these changes.

Rhamphospermum Andr. ex Besser Charlock

Racemes corymbose, ebracteate, several— ∞ -fld, elongated considerably in fr, secund or not; sepals green, free, deciduous; petals bright or pale yellow; stamens 6, exerted; nectar glands 4, distinct; siliques linear, terete, not inflated, torulose, with 1- or 3–5(7)-nerved valves, and a prominent, terete or slightly compressed beak, seedless or not, glab; seeds few— ∞ , globose or oblong, wingless, uniseriate; ann glab to hirsute-hispid herbs, with or without basal rosettes. (Gr *ramphos*, beak, and *sperma*, seed, referring to fr shape). *Brassica*, in part, *Sinapis*, in part.



1a Valves 1-veined, beak seedless; fr ped erect, peds 2–6 mm; siliques \pm appressed to rachis, 1–2.5 cm, not torulose, \pm 4-angled, glab; beak (1–)2–5(–6) mm; seeds 2–5(–8) per locule, 1.2–1.5(–2) mm; pls gen hirsute-hispid near base; fields, roadsides, wastelots, and other disturbed areas; weedy European and nw Africa intro, frequent in our area; AK s, both sides Cas, to CA, e to Atl coast; black c. (*B. n.*)

1 **R. nigrum** (L.) Al-Shehbaz

1b Valves 3–5(–7)-veined, beak 1- or 2-seeded; fr peds ascending to suberect, 3–7 mm; siliques not appressed to rachis, (1.5–)2–4.5(–5.7) cm, torulose, subterete, glab (sparsely short-hairy); beak (0.7–)1–1.6 cm; seeds (2–)4–8(–12) per locule, 1–2 mm; pls gen hirsute-hispid near base; wastelots and other disturbed areas; European intro; AK s, both sides Cas, to CA, e across N Am; charlock (*B. a.*, *B. kaber*, *S. a.*)

2 **R. arvensis** (L.) Andr. ex Besser